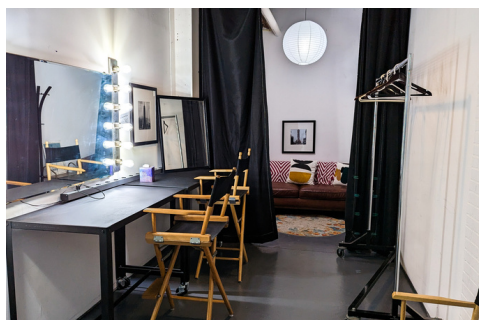
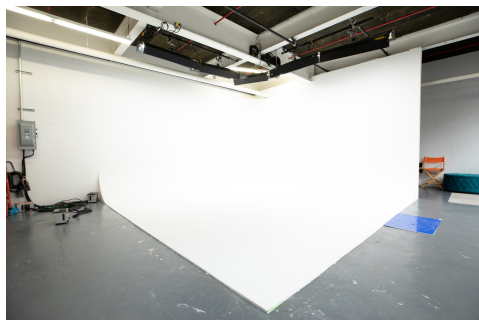


# WHITE CYCLORAMA

2,000 SQ FT PHOTO AND VIDEO STUDIO



## FEATURES

- 18 x 18 Cyclorama Wall
- 14' Ceiling with I-Beams for Rigging
- Large 10' High Windows
- 3-Phase Power
- HMU Styling and Changing Area
- Kitchenette with Sink
- Hi-Speed Internet
- Black and White Printer
- Air-Conditioning
- Security System
- Ground Floor Load-In Through Private Parking Lot
- On-Site Parking Available

## RATES

- \$100 / Hour (4 Hour Minimum)
- \$1000 / 10 Hour Day
- \$3000 / Week
- \$12,000 / Month

## HOURS

- 7a - 8p Monday Friday
- 8a - 8p Saturday
- Closed Sundays

# STUDIO 1 OVERHEAD

